

YK350XCH

- Arm length 350mm
- Maximum payload 3kg

Ordering method

YK350XH - 150		RCX240				BB
Model	Z axis stroke	Cable length	Controller	Usable for CE	Expansion I/O <small>Note 1</small>	Network option
	150: 150mm	3L: 3.5m (Standard) 5L: 5m 10L: 10m		No entry: Standard E: CE marking	N, P: Standard I/O 16/8 N1, P1: 40/24 N2, P2: 64/40 N3, P3: 88/56 N4, P4: 112/72	No entry: None CC: CC-Link DN: DeviceNet PB: Profibus EN: Ethernet YC: YC-Link <small>Note 2</small>
						Battery
						BB: 4 pcs

Note 1. Use N to N4 when NPN is selected on the I/O board, and P to P4 when PNP is selected.
Note 2. Available only for the master.



Basic specifications

Axis specifications	Arm length (mm)	X axis	Y axis	Z axis	R axis
Rotation angle ()		+/-115	+/-128	-	+/-360
AC servo motor output (W)		200	100	100	100
Repeatability <small>Note 1</small> (XYZ mm) (R)		+/-0.01		+/-0.01	+/-0.005
Maximum speed (XYZ m/sec) (R /sec)		5.0		1.0	1020
Maximum payload (kg)		3			
Standard cycle time with 2kg payload (sec)		0.54			
R-axis tolerable moment of inertia <small>Note 2</small> (kgm ²)		0.05			
User wiring (sq x wires)		0.2 x 10			
User tubing (Outer diameter)		φ4 x 3			
Travel limit		1.Soft limit, 2.Mechanical stopper (X, Y, Z axes)			
Robot cable length (m)		Standard: 3.5 Option: 5, 10			
Weight (kg)		16			
Degree of cleanliness		CLASS 10 <small>Note 3</small>			
Intake air (Nℓ/min)		60 <small>Note 4</small>			

Note 1. This is the value at a constant ambient temperature. (X,Y axes)

Note 2. There are limits to the setting of the acceleration coefficient.

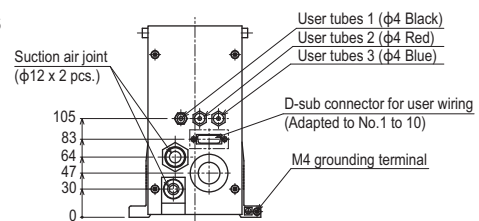
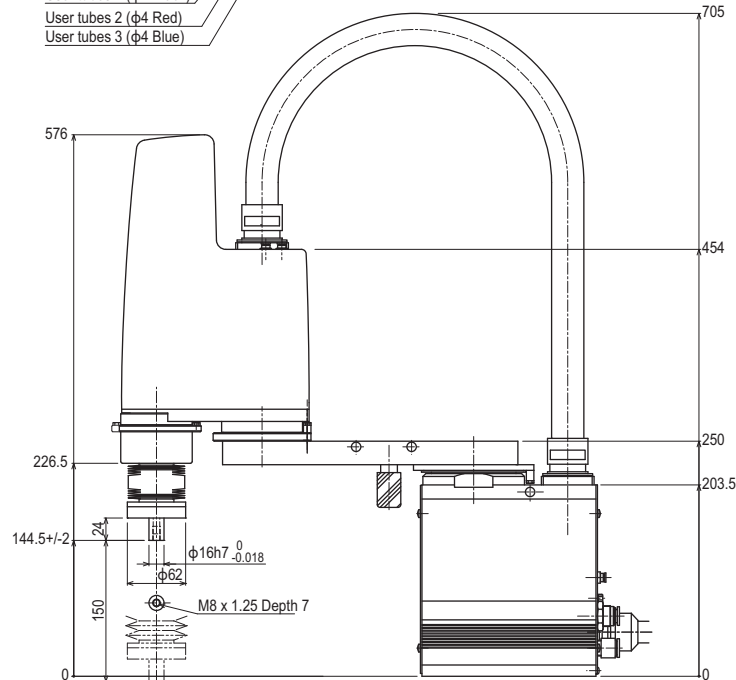
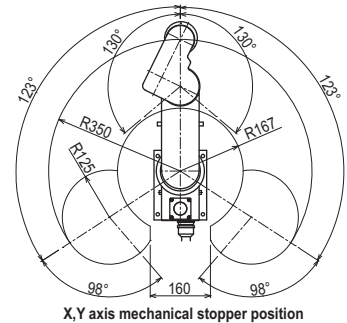
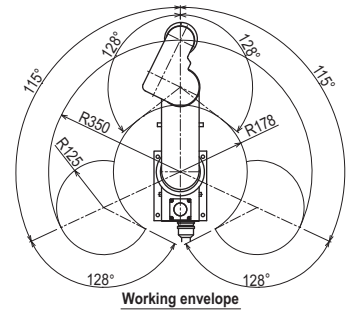
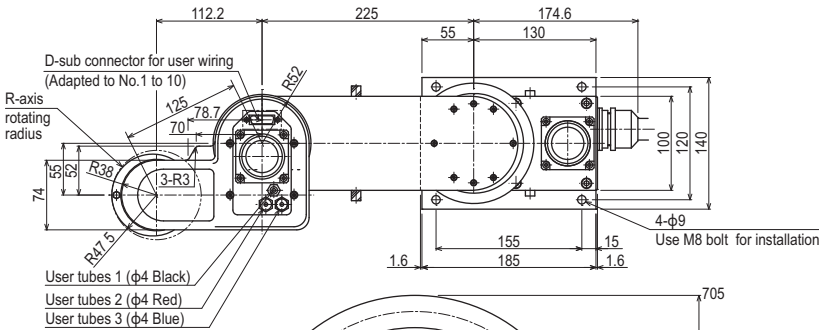
Note 3. Per 1cf (0.1μm base), when suction blower is used.

Note 4. The necessary intake amount varies depending on the use conditions and environment.

Controller

Controller	Power capacity (VA)	Operation method
RCX240	1000	Programming / I/O point trace / Remote command / Operation using RS-232C communication

YK350XCH



Controller
RCX240 ▶ 402

341

APPLICATION
TRANSERO

Compact
single-axis robots

FLIP-X
Single-axis robots

PHASER
Linear motor
single-axis robots

XY-X
Cartesian
robots

YK-XG
SCARA
robots

YP-X
Pick & place
robots

CLEAN

CONTROLLER
INFORMATION

Single-axis
Cartesian

SCARA